

# EX41922 Series

Hardened Unmanaged 2-port 10/100/1000BASE + 2-port 100/1000 SFP Ethernet Switch



## Overview

EtherWAN's EX41922 Series is a compact hardened unmanaged gigabit switch, designed as an easily deployed platform for peripheral devices in harsh environments. It is a cost-effective option for surveillance systems in extreme climates.

The EX41922 Series is equipped with two 10/100/1000Base RJ-45 copper ports, and two 100/1000Base SFP fiber optic slots for long distance connectivity. The two uplink SFP interfaces provide 100 or 1000SFP speed, selected by DIP switch. They can be used in a daisy chain formation, and are compatible with the proprietary Alpha-chain redundancy protocol when used with a compatible EtherWAN managed switch. Although unmanaged, the EX41922 is feature-rich with 10K Jumbo Frame support, full wire speed gigabit throughput, QoS support, and eco-friendly IEEE802.3az EEE (Energy Efficient Ethernet) compliance. With its hardened specifications, high performance, and energy efficiency, the EX41922 is a flexible and reliable solution for extended networks.

EtherWAN — "When Connectivity is Crucial."

## Spotlight

### + Hardened Grade

- Supports -40 to 75°C (-40 to 167°F) operating temperature
- Redundant power inputs on terminal block connector
- Supports DIN-Rail mounting

### + Fiber Connectivity

- Up to two 1000BASE SFP ports for daisy chain or Alpha-chain applications
- Provides 100BASE or 1000BASE SFP by DIP switch

### + Port Failure Alarm

- Provide relay alarm to notify users when power fails or link down occurs by DIP switch

### + Full Gigabit bandwidth and Jumbo frame

- Gigabit wire-speed transmission for bandwidth-demanding application
- Jumbo frame up to 10K bytes to increase throughput and transmission efficiency

# Specifications

## + Technology

### Standards

IEEE802.3 10BASE-T  
IEEE802.3u 100BASE-TX/100BASE-FX  
IEEE802.3ab 1000BASE-T  
IEEE802.3z 1000BASE-SX/1000BASE-LX  
IEEE802.1x, Full duplex flow control  
IEEE802.1az Energy Efficient Ethernet

### Forward and Filtering Rate

14,880pps for 10Mbps  
148,810pps for 100Mbps  
1,488,100pps for 1000Mbps

### Packet Buffer Memory

1MB

### Processing Type

Store-and-Forward  
Auto Negotiation  
Half-duplex back-pressure and IEEE802.3x full-duplex flow control  
Auto MDI/MDIX

### Jumbo Frame

10K bytes

### Address Table Size

8K MAC addresses

### Broadcast Storm Protection Threshold

Limit 15,000 packets per second.

## + Interface

### Ethernet Ports

10/100/1000BASE-T: 2 ports  
100/1000BASE SFP: 2 ports

### LED Indicators

Per Unit: Power1 (Green), Power2 (Green), Alarm (Red)

Per Port: Link & Activity (Green)

### DIP Switches

Enable/Disable Port fault alarm, SFP port on 100BASE.

### Alarm Contact

One relay output with current 1A@250VAC  
Supports normal close and normal open

## + Environment

### Operating Temperature

-40 to 75°C (-40 to 167°F)

### Storage Temperature

-40 to 85°C (-40 to 185°F)

### Ambient Relative Humidity

5% to 95% (non-condensing)

## + Power

### Voltage

12~48VDC

### Power Consumption

3.2W Max. 0.26A@12VDC

0.13A@24VDC

0.06A@48VDC

## + Mechanical

### Casing

Metal case

IP30

### Dimensions

36 x 90 x 100mm (W x D x H)

(1.42" x 3.54" x 3.94")

### Weight

0.25Kg (0.55lb)

### Installation

DIN-Rail

## + Regulatory Approvals

### ISO

Manufactured in an ISO 9001 facility

### EMI

FCC Part 15B Class A

VCCI Class A

EN 61000-6-4

### EMS

EN 61000-6-2

- EN 61000-4-2 (ESD Standards)
- EN 61000-4-3 (Radiated FRI Standards)
- EN 61000-4-4 (Burst Standards)
- EN 61000-4-5 (Surge Standards)
- EN 61000-4-6 (Induced RFI Standards)
- EN 61000-4-8 (Magnetic Field Standards)

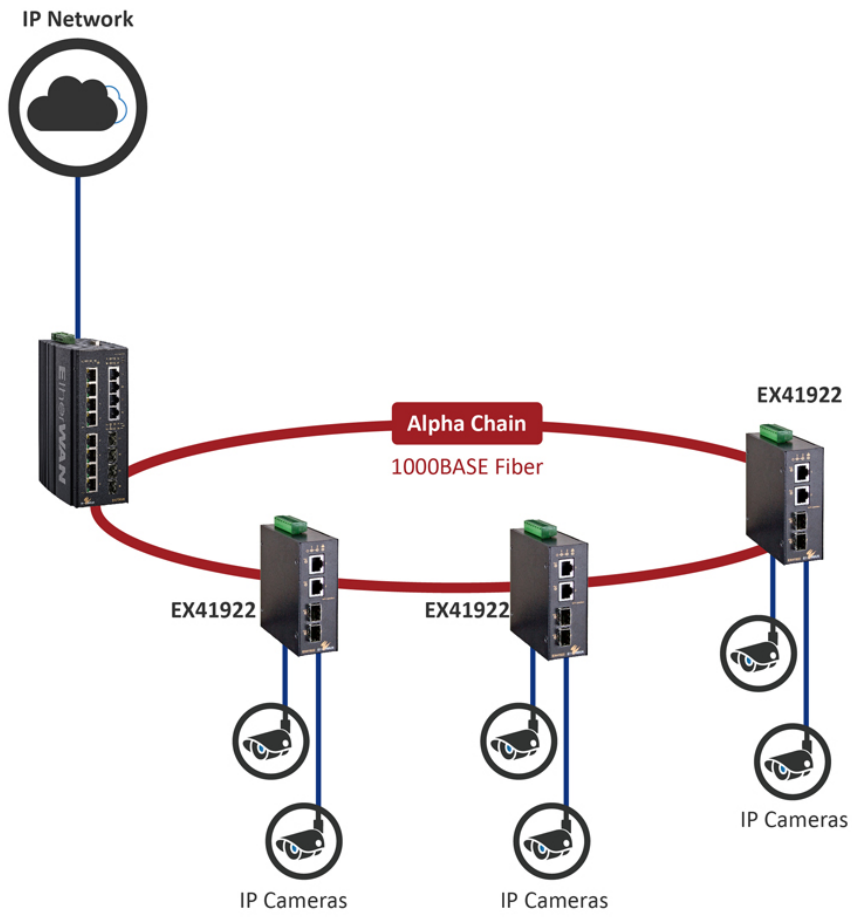
### Environmental Test Compliances

IEC 60068-2-6 Fc (Vibration)

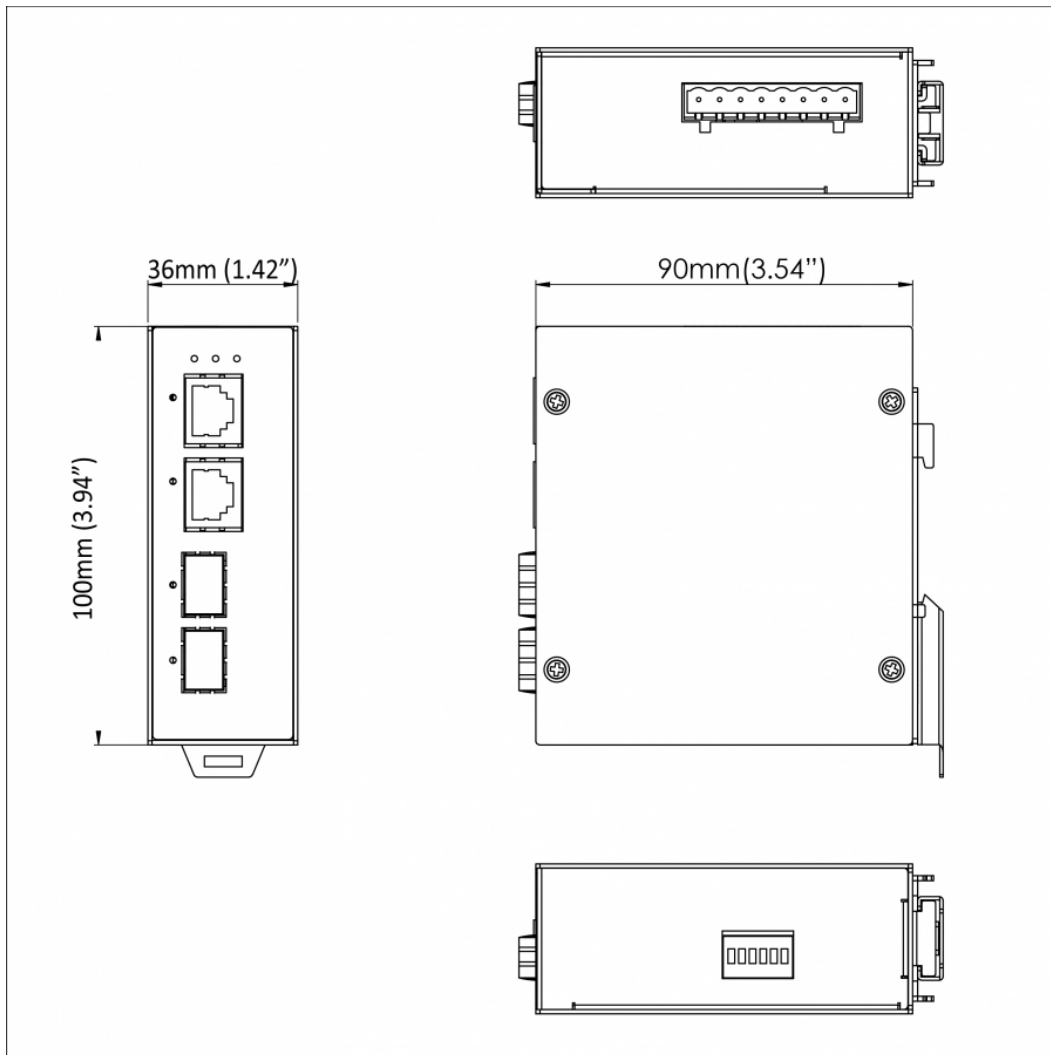
IEC 60068-2-27 Ea (Shock)

FED STD 101C Method 5007.1 (Free fall w/ package)

# Application



## Dimensions



## Ordering Info

### + Model

<b>EX41922</b>	Hardened Unmanaged 2-port 10/100/1000Base-T + 2-port 100/1000 SFP Ethernet Switch
----------------	---

\* DIN-Rail mounting kit included



© EtherWAN Systems, Inc. All rights reserved. 20240830

EtherWAN is constantly developing and improving products. Specifications are subject to change without notice and without incurring any obligation.