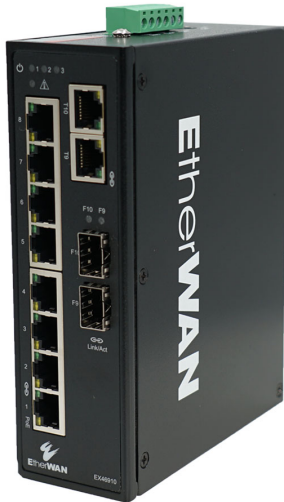


## EX46910

Hardened Unmanaged 8-Port Gigabit PoE and 2-Port Gigabit RJ45/SFP Combo Ethernet Switch



## Overview

EtherWAN's EX46910 is a compact hardened unmanaged DIN-rail mounted PoE switch. 8 gigabit PoE ports provide up to 30W output per port with a PoE power budget of 240W, ensuring that the maximum possible power is delivered to every device at all times. 2 combo uplink ports provide flexibility for data transmission and cascading. The EX46910 provides the power required to support various security and other network applications, along with flexibility, speed, and reliability to support networks where connectivity is crucial.

EtherWAN — "When Connectivity is Crucial."

## Highlights

### + High-Power PoE (Power over Ethernet)

- Up to 30W output for various security applications such as PTZ cameras
- Total PoE power budget of 240W available
- Backward compatible with 802.3af devices

### + Hardened-Grade for Non-Ventilated & Harsh Environments

- Wide operating temperature range -40 to 75°C (-40 to 167°F)
- Fanless operation
- High impact, thermal shock, and electrical noise resistance

### + Support

- Complimentary Technical Support
- In-person training and free online training courses available
- Limited Lifetime Warranty

## Specifications

### + Interface

**Ethernet**

8 x 10/100/1000BASE-T(X)  
2 x 1000BASE SFP/RJ45 Combo

**Alarm Contact**

1 x Relay Output

**Current Capacity**

1A@24VDC

**LED Indicators**

Per Unit: Power 1, Power 2, Power 3, Relay  
Per Port: Link/Activity

### + Technology

**Standards**

IEEE 802.3 10BASE-T  
IEEE 802.3u 100BASE-TX/100BASE-FX  
IEEE 802.3ab 1000BASE-T  
IEEE 802.3z 1000BASE-X  
IEEE 802.3x full duplex and flow control  
IEEE 802.3af PoE  
IEEE 802.3at PoE+

**Forward/Filtering Rate**

14,800pps for 10Mbps  
148,810pps for 100Mbps  
1,488,100pps for 1000Mbps

**Processing Type**

Store-and-forward  
Auto-negotiation  
Half-duplex back-pressure and full-duplex flow control  
Auto MDI/MDIX

### + Power

**Input**

48-56VDC redundant (terminal block) + 48-56VDC power DIN connector; 12-56VDC range for switch-only operation (no PoE)

**Power Consumption**

5.76W max@48VDC, without PoE

**PoE Power Output**

Per Port: Up to 30W/port  
Power Budget: 240W

**Protection**

Reverse Polarity Protection  
Current Overload Protection

### + Physical

**Casing Material**

Aluminum

**IP Rating**

IP30

**Dimensions**

1.89" x 4.72" x 6.1" (W x D x H)  
48 x 120 x 155mm

**Weight**

1lbs (0.45kg)

**Installation Type**

DIN-rail or wall/panel mounting

### + Switch Properties and Performance

**Switching Fabric**

20Gbps

**Jumbo Frame Size**

10KB

**MAC Table Size**

11K

**Packet Buffer Memory**

2Mb

## + Regulatory

### ISO

Manufactured in ISO-9001 facility

### EMI

FCC Part 15B Class A

EN 55032

EN 55024

### EMS

EN 61000-4-2 (ESD)

EN 61000-4-4 (Burst)

EN 61000-4-5 (Surge)

### Safety

UL 60950-1

### Vibration

IEC 60068-2-6

### Shock

IEC 60068-2-27

### Free Fall

EN 60068-2-32

## + Environmental

### Operating Temp.

-40 to 167°F (-40 to 75°C)

### Storage Temp.

-40 to 185°F (-40 to 85°C)

### Relative Humidity

5% to 95% (non-condensing)

### MTBF

>500,000 hours@50°C

## + Warranty

### Length

Limited Lifetime

### Details

[www.etherwan.com/support/warranty-policy](http://www.etherwan.com/support/warranty-policy)

## + What's Included

### Device

Switch

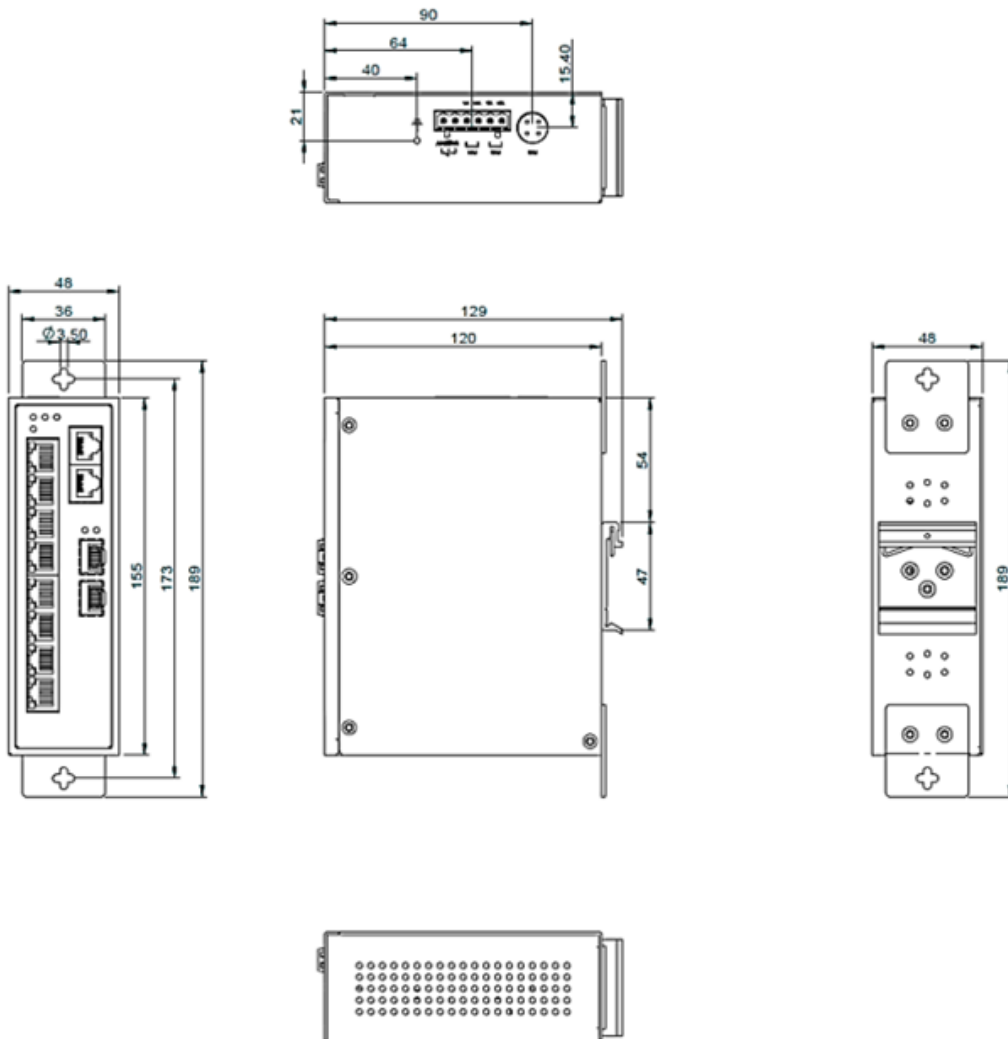
### Installation

Mounting brackets, screws, 6-pin terminal block

### Documentation

Quick install guide

## Dimensions



## Ordering Info

### + Model

EX46910	8-port 10/100/1000BASE-T PoE + 2-port Combo Gigabit TX/SFP Ethernet Switch
---------	--

### + Accessories

Hardened Gigabit SFP Modules	<a href="http://www.etherwan.com/products/sfp-fiber-transceiver">www.etherwan.com/products/sfp-fiber-transceiver</a>
Power Supplies	<a href="http://www.etherwan.com/products/power-supplies">www.etherwan.com/products/power-supplies</a>



© EtherWAN Systems, Inc. All rights reserved. 20241122

EtherWAN is constantly developing and improving products. Specifications are subject to change without notice and without incurring any obligation.