

EX41922 系列

強固級非網管 2埠10/100/1000BASE +2埠100/1000SFP 乙太網路交換器



產品介紹

EX41922系列為一款輕巧型強固級非網管Gigabit乙太網路交換器，配備2個10/100/1000Base RJ-45網路埠及2個100/1000Base SFP光纖埠可支援長距離傳輸，兩個傳輸SFP介面提供100或1000SFP兩種速率，可透過指撥鍵(DIP switch)設定。同時也支援daisy chain架構，若搭配益網科技網管型設備之架構，更可支援Alpha-chain網路備援協定。

EX41922支援10K Jumbo Frame support、full wire speed Gigabit throughput、QoS support，並符合eco-friendly IEEE 802.3az EEE (Energy Efficient Ethernet)標準。具備了強固級、高效能及節能等高性能，EX41922是網路延伸規劃中最具彈性且最可靠的解決方案。

EtherWAN — "When Connectivity is Crucial."

產品亮點

+ 強固等級設計

寬溫操作 (-40 到75°C)
雙備援電源輸入
支援鋁軌式安裝

+ 光纖介面連接

最高可支援兩埠 100/1000BASE SFP 可搭配 daisy chain 或 Alpha-chain 之應用
可透過 DIP 指撥器調整速率為 100BASE 或 1000BASE

+ 斷線告警

透過指撥開關設定告警，當發生斷電或斷線情形將發出告警至使用者端

+ 支援全 Gigabit 頻寬及 Jumbo frame

Gigabit 全線速傳輸，滿足高頻寬需求之應用
Jumbo frames 最高可支援 10K bytes 以強化傳輸效能

產品規格

+ Technology

Standards

IEEE802.3 10BASE-T
IEEE802.3u 100BASE-TX/100BASE-FX
IEEE802.3ab 1000BASE-T
IEEE802.3z 1000BASE-SX/1000BASE-LX
IEEE802.1x, Full duplex flow control
IEEE802.1az Energy Efficient Ethernet

Forward and Filtering Rate

14,880pps for 10Mbps
148,810pps for 100Mbps
1,488,100pps for 1000Mbps

Packet Buffer Memory

1MB

Processing Type

Store-and-Forward
Auto Negotiation
Half-duplex back-pressure and IEEE802.3x full-duplex flow control
Auto MDI/MDIX

Jumbo Frame

10K bytes

Address Table Size

8K MAC addresses

Broadcast Storm Protection Threshold

Limit 15,000 packets per second.

+ Power

Voltage

12~48VDC

Power Consumption

3.2W Max. 0.26A@12VDC
0.13A@24VDC
0.06A@48VDC

+ Mechanical

Casing

Metal case
IP30

Dimensions

36 x 90 x 100mm (W x D x H)
(1.42" x 3.54" x 3.94")

Weight

0.25Kg (0.55lb)

Installation
DIN-Rail

產品應用圖

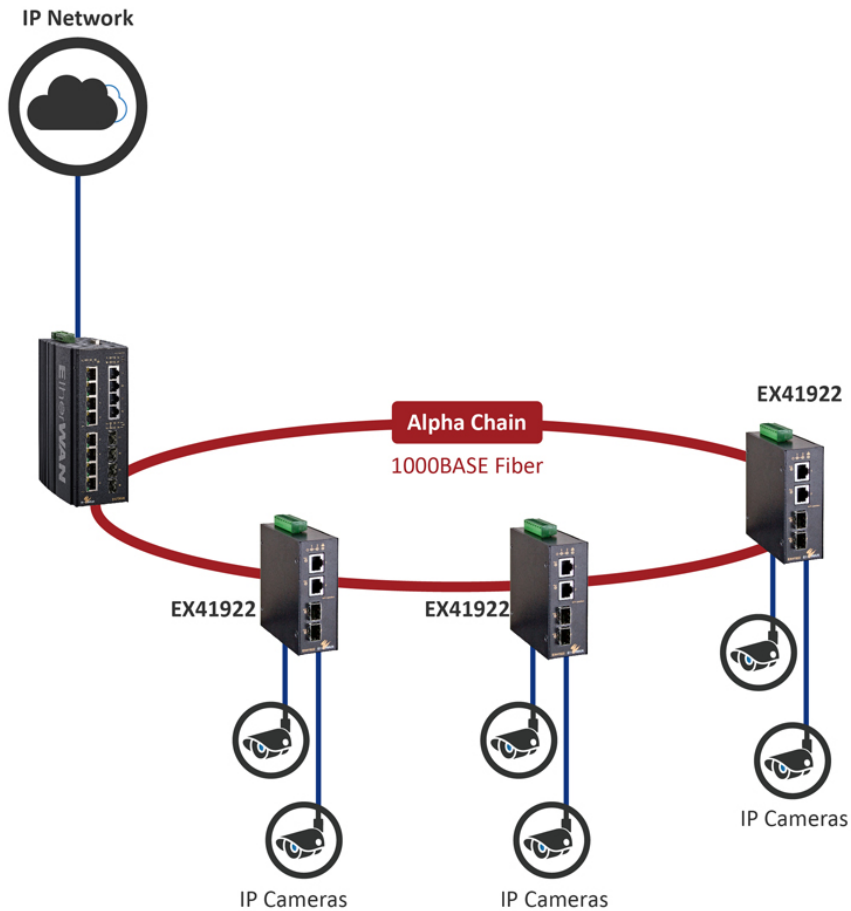
+ Interface

Ethernet Ports

10/100/1000BASE-T: 2 ports
100/1000BASE SFP: 2 ports

LED Indicators

Per Unit: Power1 (Green), Power2 (Green), Alarm (Red)
Per Port: Link & Activity (Green)



Port on

10VAC
Open



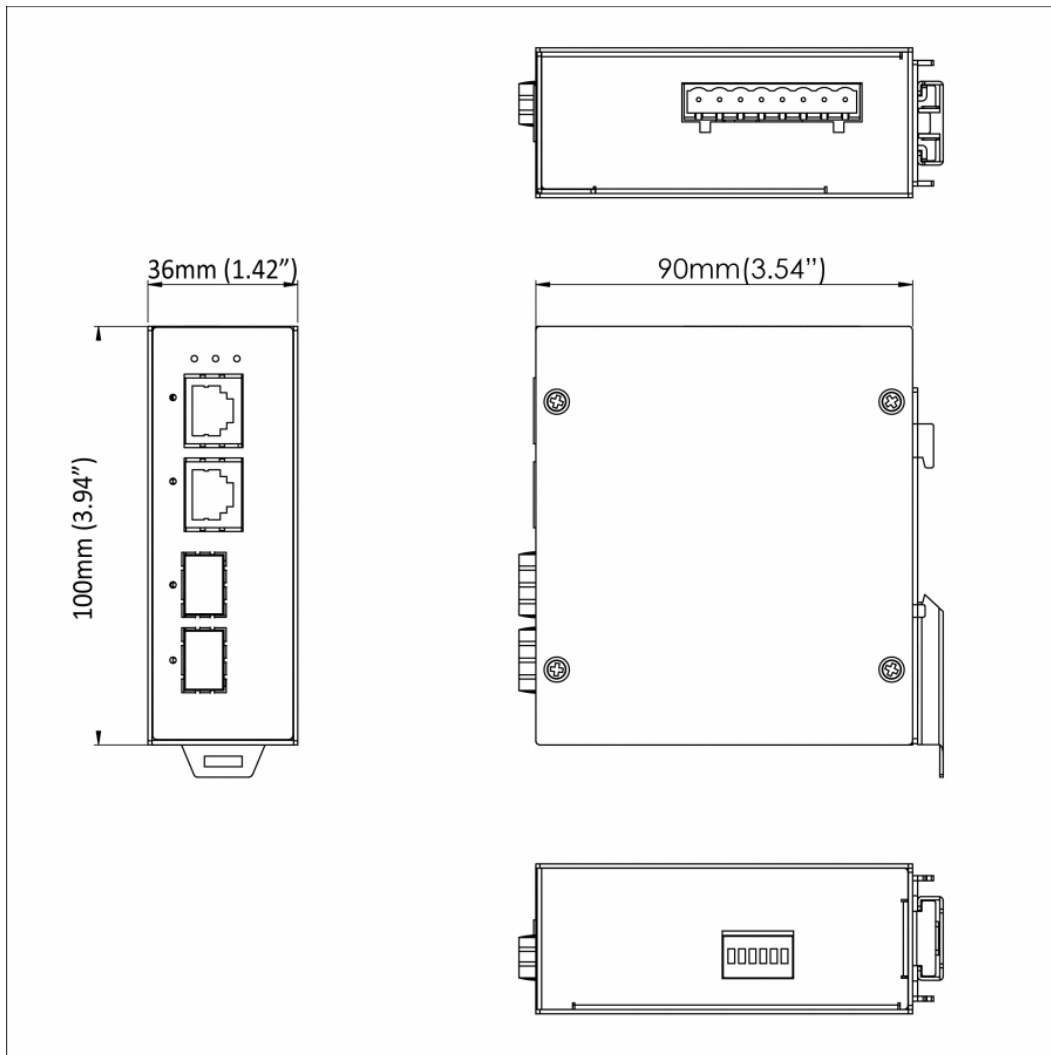
ds)

- EN 61000-4-6 (Induced RF Standards)
- EN 61000-4-8 (Magnetic Field Standards)

Environmental Test Compliances

IEC 60068-2-6 Fc (Vibration)
IEC 60068-2-27 Ea (Shock)
FED STD 101C Method 5007.1 (Free fall w/
package)

產品尺寸圖



訂購型號

型號

EX41922

2-port 10/100/1000Base-T +2-port 100/1000 SFP Hardened Unmanaged Ethernet Switch

* DIN-Rail mounting kit included.



© EtherWAN Systems, Inc. All rights reserved. 20230427

EtherWAN is constantly developing and improving products. Specifications are subject to change without notice and without incurring any obligation.