

## EX16916 系列

非網管16埠Gigabit乙太網路交換器



### 產品介紹

本產品自2020年10月10日起停產。請點選 [此處](#) 尋找替代產品。

The EX16916 Series is equipped with sixteen Gigabit Ethernet ports and feature rich with 9K Jumbo Frame support, full wire speed Gigabit throughput, QoS support and eco-friendly IEEE802.3az EEE (Energy Efficient Ethernet) compliant, making the EX16916 Series a powerful yet energy efficient network switch.

EtherWAN — "When Connectivity is Crucial."

## 產品亮點

### Jumbo Frame Support

- » Up to 9K bytes

### High Reliability

- » Fanless design
- » No moving parts

### Eco-friendly support

- » IEEE802.3az EEE (Energy Efficient Ethernet) allow less consumption during periods of low data activity

### QoS

- » Traffic classification based on IEEE802.1p CoS

## 產品規格

### Technology

#### Standards

- IEEE802.3 10BASE-T
- IEEE802.3u 100BASE-TX/100BASE-FX
- IEEE802.3ab 1000BASE-T
- IEEE802.3x Full duplex flow control
- IEEE802.3az Energy Efficient Ethernet
- IEEE802.1p Quality of Service (QoS)

#### Forward and Filtering Rate

- 14,880pps for 10Mbps
- 148,810pps for 100Mbps
- 1,488,100pps for 1000Mbps

#### Packet Buffer Memory

- 256KB

#### Processing Type

- Store-and-Forward
- Auto Negotiation
- Half-duplex back-pressure and IEEE802.3x full-duplex flow control
- Auto MDI/MDIX

#### Jumbo Frame

- 9K bytes

#### Address Table Size

- 8K MAC addresses

---

### Power

#### Input Voltage

- 100 to 240VAC

#### Power Consumption

- 8.1W Max. 0.85A.
- 

## Mechanical

### Casing

- Metal case
- IP30

### Dimensions

- 42mm (H) x 216mm (W) x 133mm (D)  
(1.68" (H) x 8.64" (W) x 5.32" (D))

### Weight

- 0.9Kg (1.98lbs.)

### Installation

- Rack-mount (rack mounting kit included)
- 

## Interface

### Ethernet Port

- 10/100/1000BASE-T: 16 ports

### LED Indicators

- Per Unit: Power (Green)
  - Per Port: Link & Activity (Green)
- 

## Environment

### Operating Temperature

- 0°C to 50°C (32°F to 122°F)

### Storage Temperature

- -40°C to 70°C (-40°F to 158°F)

### Ambient Relative Humidity

- 10% to 95% (non-condensing)

---

## Regulatory Approvals

### ISO

- Manufactured in an ISO9001 facility

### EMI

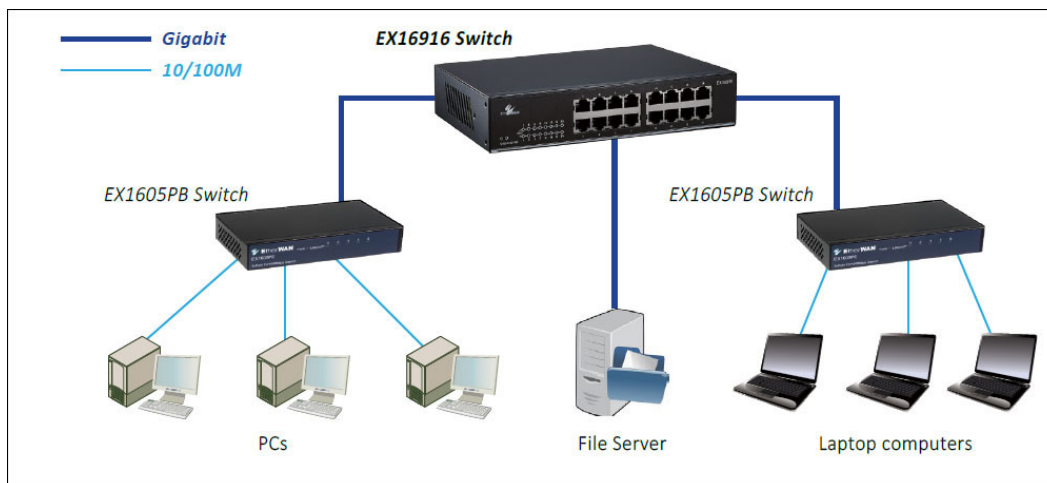
FCC Class B

CE Class B

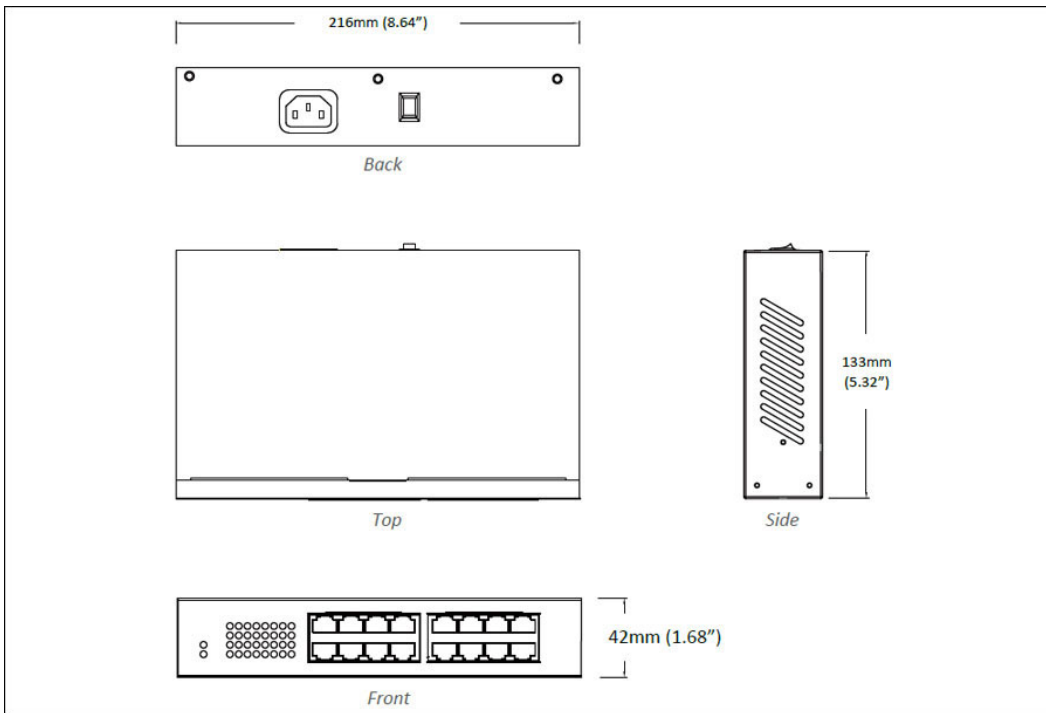
LVD EN60950-1

---

## 產品應用圖



## 產品尺寸圖



## 訂購型號

### Model

EX16916

Unmanaged 16 Port Gigabit Ethernet Switch



© EtherWAN Systems, Inc. All rights reserved. 20220919

EtherWAN is constantly developing and improving products. Specifications are subject to change without notice and without incurring any obligation.