

## EX41922 Series

Hardened Unmanaged 2-port 10/100/1000BASE + 2-port 100/1000 SFP Ethernet Switch



### Overview

EtherWAN's EX41922 Series is a compact hardened unmanaged gigabit switch, designed as an easily deployed platform for peripheral devices in harsh environments. It is a cost-effective option for surveillance systems in extreme climates.

The EX41922 Series is equipped with two 10/100/1000Base RJ-45 copper ports, and two 100/1000Base SFP fiber optic slots for long distance connectivity. The two uplink SFP interfaces provide 100 or 1000SFP speed, selected by DIP switch. They can be used in a daisy chain formation, and are compatible with the proprietary Alpha-chain redundancy protocol when used with a compatible EtherWAN managed switch. Although unmanaged, the EX41922 is feature-rich with 10K Jumbo Frame support, full wire speed gigabit throughput, QoS support, and eco-friendly IEEE802.3az EEE (Energy Efficient Ethernet) compliance. With its hardened specifications, high performance, and energy efficiency, the EX41922 is a flexible and reliable solution for extended networks.

EtherWAN — "When Connectivity is Crucial."

## Spotlight

### + Hardened Grade

Supports -40 to 75°C (-40 to 167°F) operating temperature  
Redundant power inputs on terminal block connector  
Supports DIN-Rail mounting

### + Fiber Connectivity

Up to two 1000BASE SFP ports for daisy chain or Alpha-chain applications  
Provides 100BASE or 1000BASE SFP by DIP switch

### + Port Failure Alarm

Provide relay alarm to notify users when power fails or link down occurs by DIP switch

### + Full Gigabit bandwidth and Jumbo frame

Gigabit wire-speed transmission for bandwidth-demanding application  
Jumbo frame up to 10K bytes to increase throughput and transmission efficiency

## Specifications

### + Technology

#### Standards

IEEE802.3 10BASE-T  
IEEE802.3u 100BASE-TX/100BASE-FX  
IEEE802.3ab 1000BASE-T  
IEEE802.3z 1000BASE-SX/1000BASE-LX  
IEEE802.1x, Full duplex flow control  
IEEE802.1az Energy Efficient Ethernet

#### Forward and Filtering Rate

14,880pps for 10Mbps  
148,810pps for 100Mbps  
1,488,100pps for 1000Mbps

#### Packet Buffer Memory

1MB

#### Processing Type

Store-and-Forward  
Auto Negotiation  
Half-duplex back-pressure and IEEE802.3x full-duplex flow control  
Auto MDI/MDIX

#### Jumbo Frame

10K bytes

#### Address Table Size

8K MAC addresses

#### Broadcast Storm Protection Threshold

Limit 15,000 packets per second.

### + Power

#### Voltage

12~48VDC

#### Power Consumption

3.2W Max. 0.26A@12VDC  
0.13A@24VDC  
0.06A@48VDC

### + Mechanical

#### Casing

Metal case  
IP30

#### Dimensions

36 x 90 x 100mm (W x D x H)  
(1.42" x 3.54" x 3.94")

#### Weight

0.25Kg (0.55lb)

Installation  
DIN-Rail

## + Interface

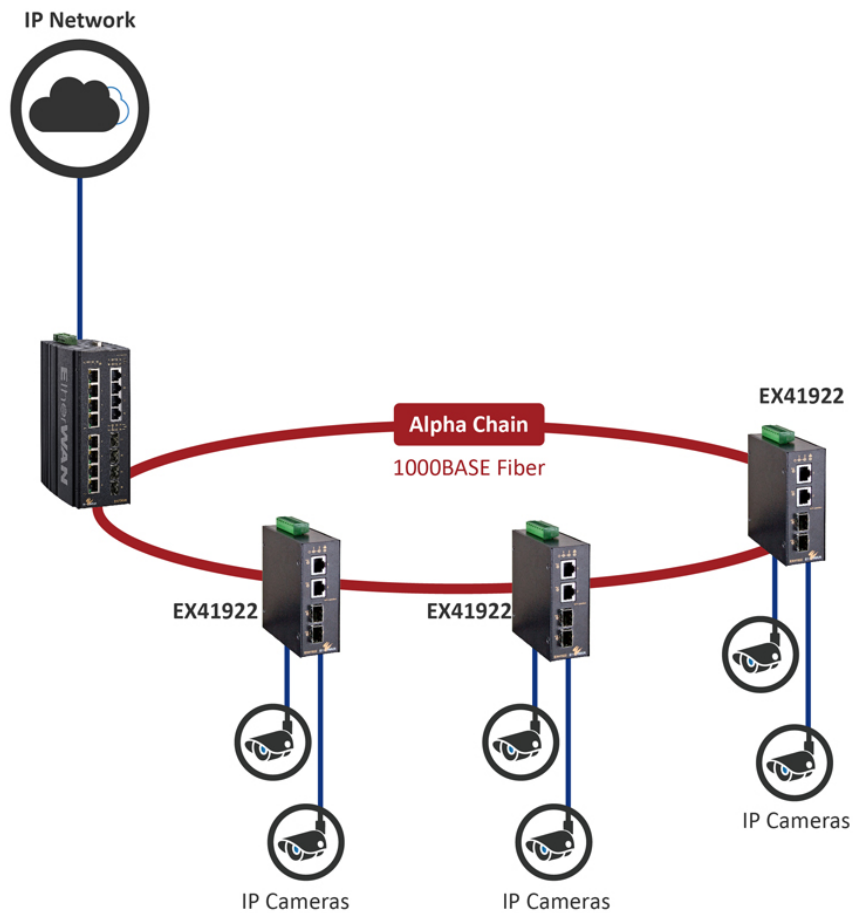
### Ethernet Ports

10/100/1000BASE-T: 2 ports  
100/1000BASE SFP: 2 ports

### LED Indicators

Per Unit: Power1 (Green), Power2 (Green), Alarm (Red)  
Per Port: Link & Activity (Green)

## Application



Port on

OVAC  
Den

## Dimensions

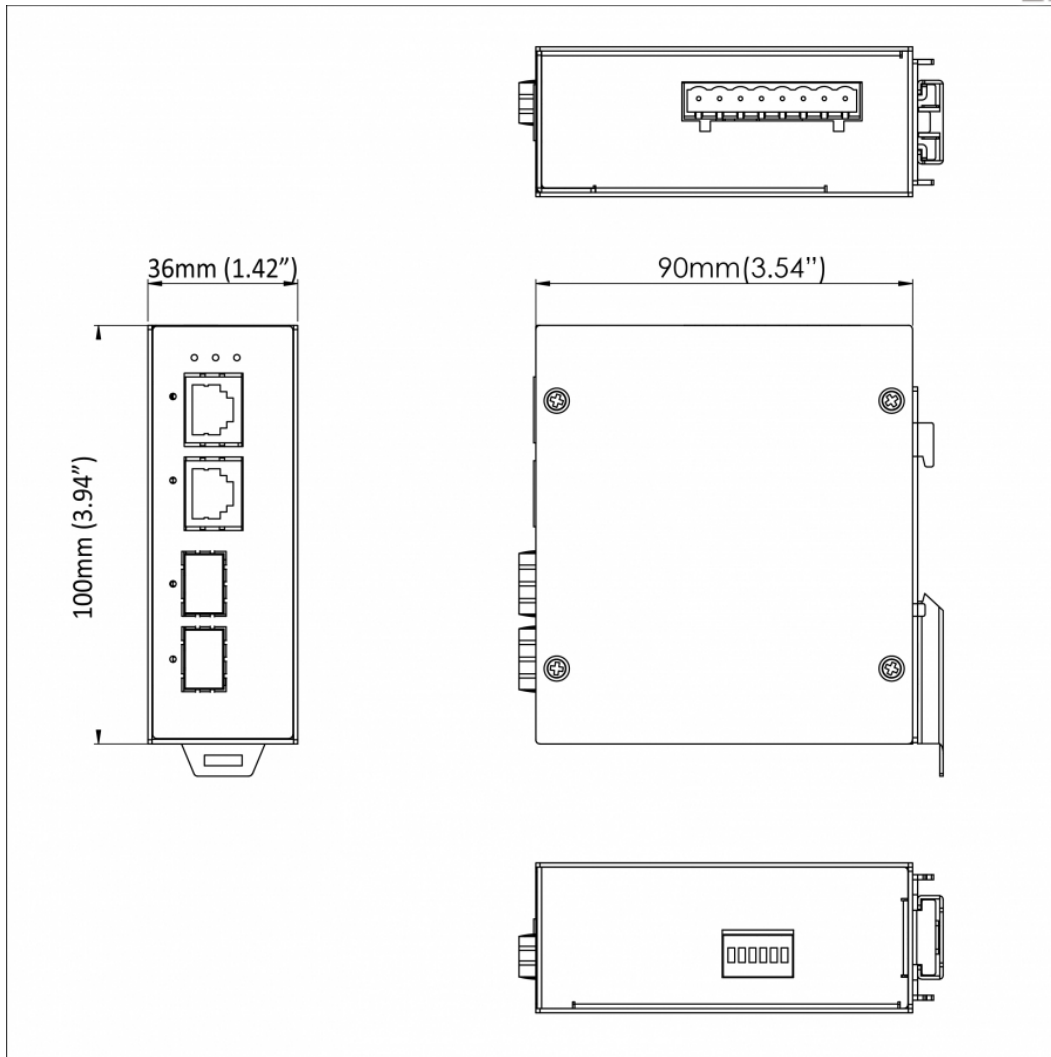


ds)

- EN 61000-4-3 (Induced RF Standards)
- EN 61000-4-8 (Magnetic Field Standards)

### Environmental Test Compliances

IEC 60068-2-6 Fc (Vibration)  
IEC 60068-2-27 Ea (Shock)  
FED STD 101C Method 5007.1 (Free fall w/  
package)



## Ordering Info

### Model

EX41922	Hardened Unmanaged 2-port 10/100/1000Base-T + 2-port 100/1000 SFP Ethernet Switch
---------	---

\* DIN-Rail mounting kit included

